

Below Golden Eagle Painting carried out the painting of the walls, ceilings, apartment doors, lobby and the external of the project.

AUSTRALIAN NATIONAL CONSTRUCTION REVIEW

Marina Painting and Golden Eagle Painting provides painting and decoration services as well as patching and skimming.

The family owned business group was established 25 years ago and have had a long working relationship with Billbergia since their very beginning.

The group prides itself on its organisational structure, with the father and son duo being the director and supervisor who communicate continuously on the progress of projects, ensuring a high level of attention to detail and quality.

For the Marina Square project, Marina Painting and Golden Eagle Painting was contracted to paint the general walls, apartment doors, general ceilings, laundry and bathrooms, lobby, entry feature walls, as well as car park and all of the external works including precast and in situ concrete. The company painted a total of over 10,000 walls, 7,500 ceilings and 6,000 pieces of timber.

The paint colours chosen for the project were the beautiful Argos Cream and Crisp White from the Wattyl range. These light colours convey a soft and elegant appearance which will appeal to prospective buyers as well as enhance natural light to liven the internal spaces.

With a team of 25 employees deployed for the project, work onsite commenced in November 2017.

The group opted to use a spray painting method for the high ceilings in the retail area and Coles. This was a new technique that they used and had to be completed at night in order to avoid spraying any other contractors and their equipment.

The main challenge that the group encountered was a difficulty in manoeuvring machinery as they had 10 painters all using scissor lifts at the same time. There was also some congestion experienced with other tradespersons who were working in the same areas which limited access availability. However, due to time coordination and a great team management they were able to work around this.

The team also decided to work seven days a week as well as conduct night shifts in order to complete the job and ensure everything was completed ahead of schedule. The night shifts were introduced for this project in order to complete the retail area as well as preventing overcrowding. It turned out to be a huge success as they had separate day and night shift employees rotating work continuously.

“We learned a lot from rotating our employees and introducing night work. It has given us another perspective of how to efficiently complete major tasks,” said Golden Eagle Painting Director, Abdul Sarakbi.

Working with Billbergia on a number of projects, Golden Eagle Painting have supplied their services across Homebush, Rhodes and Sydney Olympic Park region. The company also provide their expertise throughout Australia, working with various builders.

“I would like to give a special thank you to Billbergia and its great team. We’re honoured to be working with Billbergia for over 25 years and we would like to thank the entire team for working with us,” said Abdul.





Marina Painting Services and Golden Eagle Painting have again shown the quality of their work on large construction projects, in particular with the Sirius Waterfront Apartments.

The company worked on building cores one, five and six, carrying out painting, patching and rendering works to 355 apartments.

Golden Eagle Painting's Abdul Sarakbi said, while the company worked overtime and seven days a week to ensure all works were completed within the required timeframes, the job was fairly straight forward. "We did have the three different building cores to work around, so that just required proper planning between the different teams."

Marina Painting Services and Golden Eagle Painting had a team of 25, who worked on the project, with the schedule calling for their works to be completed before fitout. The team was there for approximately nine months, starting in December 2016.

The group have completed a number of buildings within the Wentworth Point Marinas development, having completed three or four buildings within the different stages.

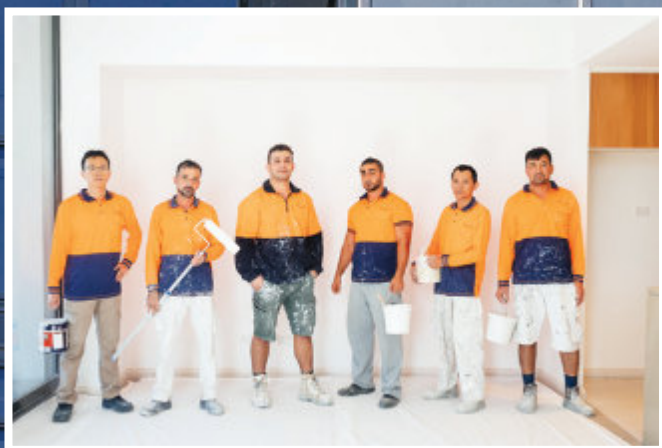
Specialising in painting and decorating, Marina Painting Services and Golden Eagle Painting have been in business for 25 years, with 20 of those focusing on the construction industry. From the outset the group have forged a strong relationship with Billbergia, which now spans over two-decades long. "I'd like to thank Billbergia and their staff for their continued support," Abdul added.

The group is about to start work for Billbergia on the Block E building for the Marina Square project as part of the next stage of the Wentworth Point Marinas development.

Below Golden Eagle Painting was responsible for painting the entire interior of Wentworth Point Marinas – Regatta.

AUSTRALIAN NATIONAL

CONSTRUCTION REVIEW



As the preferred subcontractors for Billbergia for the past 20 years, the ability of Marina Painting Services and Golden Eagle Painting when completing large construction projects is evident through their long track record with the development company.

This solid working relationship with Billbergia has continued, with the group engaged to carry out all the painting on Billbergia’s latest development at Wentworth Point Marinas – Regatta.

“We started in August last year, and all up the job has taken 10 to 11 months to complete. Overall it was a pretty straight forward job and working on projects such as Wentworth Point Marinas – Regatta further enables us to grow as a company.”

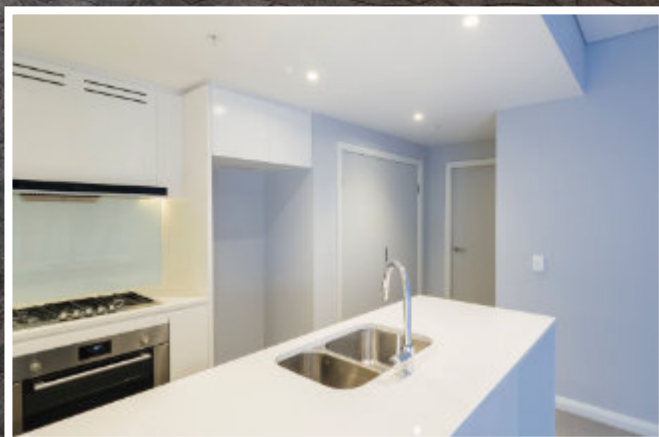
Specialising in painting and decorating, Marina Painting Services and Golden Eagle Painting have been in business for over 25 years. Of those 25 years, 20 of them have been in the construction industry.

The company works solely on construction projects. The group has dozens of employees, 22 of whom worked on the Wentworth Point Marinas – Regatta project. “My father started the business back in the mid 80s by himself painting apartments.” says Mohammad of Marina Painting Services. “We now have 30 employees and work on large construction jobs such as Wentworth Point Marinas – Regatta.”

“In fact, as a company we are used to completing works on big construction projects. This is shown by our work on Wentworth Point Marinas – Regatta and the many large projects we have worked on for Billbergia for the past 20 years.”

“Our expertise has developed rapidly through our work with Billbergia on the Z.E.N. development, also at Wentworth Point Marinas.”

“Marina Painting and Golden Eagle are proud to be the preferred subcontractors of Billbergia and look forward to working with them for decades to come,” adds Mohammad.



Marina Painting Services and Golden Eagle Painting has had a long-lasting relationship with property developer Billbergia that stretches back over 20 years. This remarkable performance speaks highly of the confidence that Billbergia and other builders and developers have in the team at Marina Painting Services & Golden Eagle Painting.

The company has completed yet another major project, having provided painting and decorating services for Billbergia at the Z.E.N Apartments at Wentworth Point in Sydney. With more than 25 years experience, 20 of those focused solely on major projects, Marina Painting Services and Golden Eagle understand what is required to complete painting and decorating contracts for Tier One builders, contractors and developers.

Projects like Z.E.N Apartments and other Billbergia developments like Wentworth Point Marinas – Regatta occupy Marina Painting Services and Golden Eagle Painting for up to 12 months by the time planning and consultation is taken into account. Golden Eagle’s Abdul Sarakbi said that once the painting project begins, the company directs most of its professional painting staff to that job. “We have around 30 employees and most of these work as a team on our major project contracts.”

Marina Painting Services and Golden Eagle Painting have retained their premier positions as Billbergia’s preferred supplier of painting and decorating services through their approach to quality work, efficiency and coordination with other trades as the project develops.

“We have a good understanding of a developer’s requirements and the need to be flexible to meet building objectives,” Abdul said. “We are very proud of the confidence Billbergia has shown in us over the years and we enjoy being a part of the team that produces impressive residential buildings like Billbergia has done around the Wentworth Point precinct in Sydney. We look forward to continuing the relationship over many years to come.”